

HUNTINGTON DRIVE MEDIANS DESIGN CRITERIA

1. Safety:

- Safety of maintenance personnel – paved areas prevent them from having to stand/ walk in the street, no planting in narrow “noses” (4’ wide or less)
- Eliminate loading/unloading of lawn mowers in medians
- Safety of drivers – minimize lane closures/merging necessity
- Avoid large open areas that might encourage jaywalking

2. Visibility:

- Clear space between 30” (top of shrubs/ ground covers) and 7’ (bottoms of tree canopies) for driver visibility
- No trees placed where they could block view of oncoming cars at left turn locations

3. Aesthetics:

- Clean look with massed plantings – not jumbled/ chaotic looking
- Color from varying flower/ foliage combinations
- Use plants that bloom at different times of the year for alternating color, and plants with varying leaf colors
- Not a dry “desert” look – possibly incorporate some succulents, but not predominantly

4. Water Conservation& Sustainability

- Eliminate most or all lawn
- Use low water use plants, emphasizing California natives where appropriate (to meet State requirements)
- Incorporate natural river rock found locally (including boulders for accent)
- Incorporate existing trees determined to be healthy; minimize root disturbance/ damage

5. Ease of Maintenance

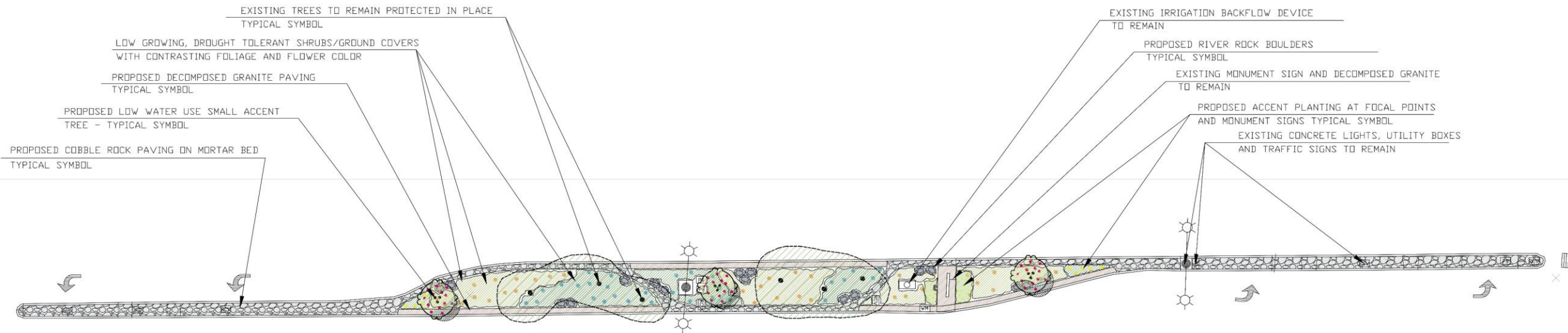
- Greatly reduced lawn mowing
- Planting to be naturally low and spreading (2’-2½’ maximum height), reducing the need for pruning to keep visibility open
- Place plants back from paving edges to minimize need for edging (and unsightly sheared, woody edges)

6. Design Flexibility

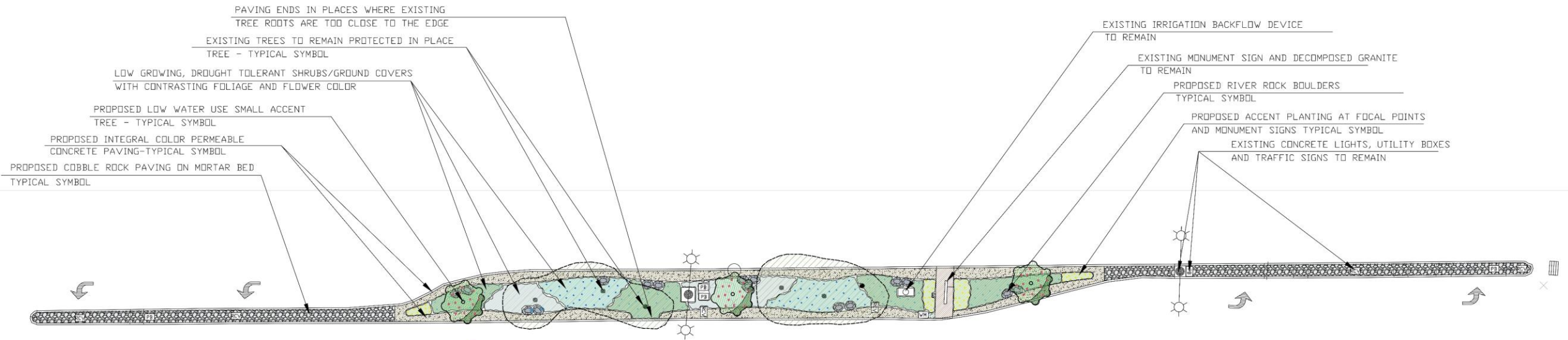
- Design and construction drawings to be developed for the entire Huntington Drive corridor, but formatted to allow bidding and build-out in phases if needed
- Variety of planting and hardscape for visual interest, but repeated throughout phases for a unified appearance

HUNTINGTON DRIVE MEDIANS PROCESS

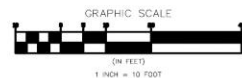
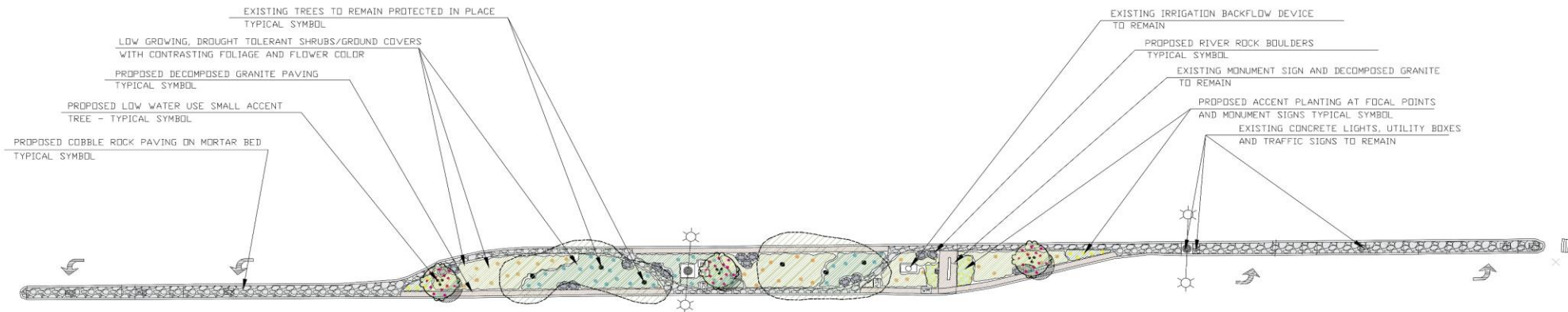
- 1. Choose a basic design concept and materials**
- 2. Develop detailed design, drawings, and cost estimates for entire Huntington Drive corridor**
- 3. Return to City Council with final construction plans, specifications, and cost estimates**
- 4. City Council decides how much of the Huntington Drive corridor should be included in the initial bid package – could be all or segment(s) of the project area**
- 5. Advertise the project for bidding, obtain bids and select a contractor**
- 6. Complete construction**



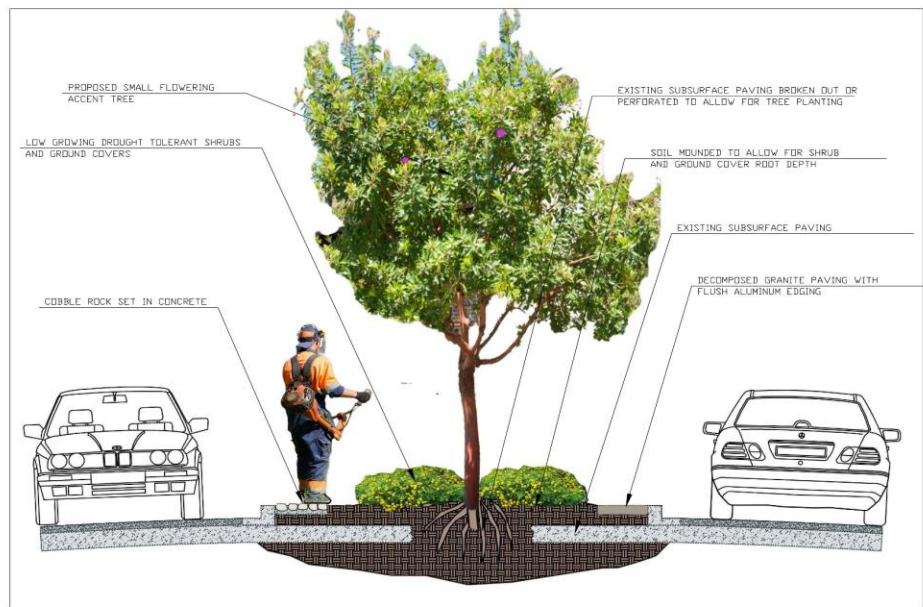
ALTERNATE A



ALTERNATE B



TYPICAL MEDIAN PLAN VIEW ALTERNATE A



TYPICAL CROSS SECTION THROUGH PLANTED AREA OF MEDIANS



RIVER ROCK COBBLE SET IN CONCRETE



DECOMPOSED GRANITE

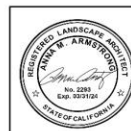
PRELIMINARY PLANT LIST

BOTANICAL NAME		COMMON NAME	PLANT FACTOR	CONTAINER SIZE	SIZE AT 5-10 YEARS OR 75% MATURITY
Trees					
Acacia stenophylla	Shoestring Acacia	Low	24" box	30' H x 20' W	
Arbutus 'Marina'	Arbutus hybrid	Low	24" box	25' H x 18' W	
Brachychiton populneus	Bottle Tree	Low	24" box	35' H x 20' W	
Cercis occidentalis*	Western Redbud	Mod./Low	24" box	15' H x 15' W	
Chilopsis linearis*	Desert Willow	Low	24" box	25' H x 15' W	
Cotinus coggygria	Smoke Tree	Low	24" box	14' H x 14' W	
Heteromeles arbutifolia*	Toyon	Low	15 gallon	18' H x 15' W	
Melaleuca linariifolia	Flax Leaf Paperbark	Low	24" box	20' H x 18' W	
Olea europaea 'Wilsonii' or 'Swan Hill'	Fruitless Olive	Low	24" box	25' H x 18' W	
Parkinsonia 'Desert Museum'	Desert Museum Palo Verde	Low	24" box	20' H x 18' W	
Low Shrubs/ Perennials/ Ground Covers (not exceeding 30" high)					
Artemisia 'Canyon Gray'	California Sagebrush hybrid	Low	1 gallon	18" H x 6" W	
Baccharis pilularis 'Pigeon Point'	Coyote Brush hybrid	Low	1 gallon	2' H x 8" W	
Bougainvillea 'Ooh La La'	Bougainvillea hybrid	Low	1 gallon	18" H x 6" W	
Cistus salviifolius 'Prostratus'	Sageleaf Rockrose	Low	1 gallon	2' H x 5" W	
Dymondia margaritae	Dymondia	Low	1 gallon	3' H x 18" W	
Eremophila glabra 'Grey Horizon'	Emu Bush hybrid	Low	1 gallon	12" H x 4" W	
Eriogonum fasciculatum 'Theodore Payne'	California Buckwheat hybrid	Low	1 gallon	2' H x 4" W	
Lantana 'Gold Rush'	Lantana hybrid	Low	1 gallon	2' H x 5" W	
Lippia nodiflora	Kurapa	Low	sod or flats 3' H x 2' W		
Monsardella villosa*	Coyote Mint	Low	1 gallon	2' H x 2" W	
Myoporum 'Burgundy Carpet'	Myoporum hybrid	Low	4" pots/flats 6" x 6" W		
Rosmarinus officinalis 'Huntington Carpet'	Huntington Carpet Rosemary	Low	1 gallon	18" H x 6" W	
Salvia 'Bee's Bliss' or 'Terra Seca'	Bee's Bliss/Terra Seca Sage	Low	1 gallon	2' H x 6" W	
Teucrium chamaedrys 'Prostratum'	Germanier hybrid	Low	1 gallon	6" H x 3" W	
Flowering Accent Plants Near Intersections & Monument Signs (not exceeding 30" high)					
Achillea millefolium hybrids*	Common Yarrow hybrids	Mod./Low	1 gallon	2' H x 3" W	
Aloe striata	Coral Aloe	Low	1 gallon	2' H x 3" W	
Arctostaphylos	African Daisy	Low	1 gallon	18" H x 2" W	
Coreopsis auriculata 'Nana'	Dwarf Coreopsis	Low	1 gallon	6" H x 2" W	
Epilobium (Zauschneria) 'Route 66'	California Fuchsia hybrid	Low	1 gallon	18" H x 3" W	
Lavandula 'Hidcote Blue'	Lavender hybrid	Low	1 gallon	18" H x 18" W	
Penstemon heterophyllus 'Margarita BOP'	Foothill Penstemon hybrid	Low	1 gallon	2' H x 2" W	
Veronica lilacina*	Cedros Island Verbena	Low	1 gallon	2' H x 3" W	
Ornamental Grasses for Small Accent Areas (not exceeding 30" high)					
Bouteloua gracilis	Blue Grama Grass	Low	4" pots	18" H x 12" W	
Festuca californiensis 'Siskiyou Blue'	Idaho Blue Fescue hybrid	Low	4" pots	2' H x 2" W	
Muhlenbergia rigida 'Nashville'	Purple Muhly	Low	4" pots	2' H x 2" W	

*California native species or native hybrid

Note: Plant Factor = water use rating for a given species per WUCOLS (Water Use Classification of Landscape Species, California Dept. of Water Resources)

Plant list to serve as a "menu" to choose plants from; not all species will be used.



PRELIMINARY LANDSCAPE PLAN ALTERNATE A

PLANS PREPARED BY:
ARMSTRONG AND WALKER
Landscape Architecture
280 Mel Canyon Road
Duarte, CA 91010
Phone: (626) 357-4599
Email: armstrongwalker@gmail.com



City of Duarte

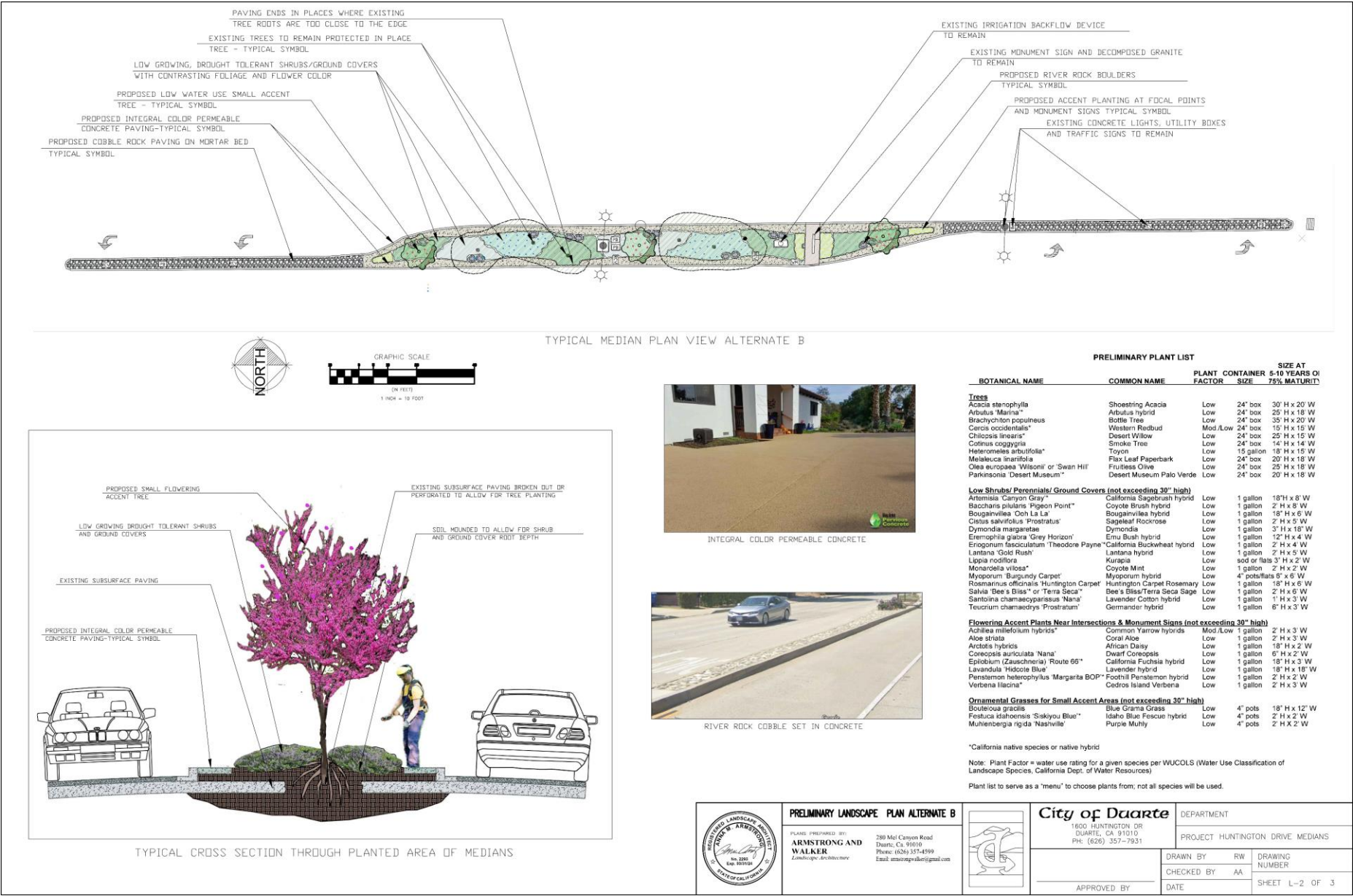
1603 HUNTINGTON DR.
DUARTE, CA 91010
PH: (626) 357-7931

DEPARTMENT

PROJECT HUNTINGTON DRIVE MEDIANS

DRAWN BY: RW
CHECKED BY: AA
DATE: _____
DRAWING NUMBER: _____
SHEET L-1 OF 3

APPROVED BY: _____



ALTERNATE B



ACACIA STENOPHYLLA
SHOESTRING ACACIA



ARBUTUS MARINA
NO COMMON NAME



BRACHYCHITON POPULNEUS
BOTTLE TREE



CERCIS OCCIDENTALIS
WESTERN REDBUD



CHIOPSIS LINEARIS
DESERT WILLOW



COTINUS COGGYGRIA
SMOKE TREE



HETEROMELES ARBUIFOLIA
TOYON



MELALEUCA LINARIFOLIA
FLAX LEAF PAPERBARK



OLEA 'SWAN HILL'
SWAN HILL OLIVE



PARKINSONIA 'DESERT MUSEUM'
DESERT MUSEUM PALO VERDE



ARTEMISIA 'CANYON GREY'
CALIFORNIA SAGEBRUSH HYBRID



BACCHARIS PILULARIS 'PIGEON POINT'
COYOTE BRUSH HYBRID



BOUGAINVILLEA 'OOH LA LA'
BOUGAINVILLEA HYBRID



CISTUS SALVIFOLIUS 'PROSTRATUS'
SAGELEAF ROCKROSE



DYMONDIA MARGARETAE
DYMONDIA



EREMOPHILIA GLABRA 'GREY HORIZON'
EMU BUSH HYBRID



ERIOGONUM FASCICULATUM 'THEODORE PAYNE'
CALIFORNIA BUCKWHEAT HYBRID



LANTANA 'GOLD RUSH'
LANTANA HYBRID



LIPPIA NODIFLORA
KURAPIA



MONARDELLA VILLOSA
COYOTE MINT



MYOPORUM 'BURGUNDY CARPET'
MYOPORUM HYBRID



ROSEMARINUS OFFICINALIS 'HUNTINGTON
CARPET'
HUNTINGTONCARPET ROSEMARY HYBRID



SALVIA 'BEES BLISS'
BEES BLISS SAGE



TEUCRIUM CHAMAEDRYS 'PROSTRATUM'
GERMANDER HYBRID



ACHILLEA MILLEFOLIUM HYBRID
COMMON YARROW HYBRIDS



ALOE STRIATA
CORAL ALOE



ARCTOTIS HYBRIDS
AFRICAN DAISY



COREOPSIS AURICULATA 'NANA'
DRAWF COREOPSIS



EPILOBIUM (ZAUCHNERIA) 'ROUTE
66'
CALIFORNIA FUSCHIA HYBRID



LAVANDULA 'HIDCOTE BLUE'
LAVENDER HYBRID



PENSTEMON HETEROPHYLLUS 'MARGARITA
BOP'
FOOTILLS PENSTEMON HYBRID



VERBENA LILACINA
CEDROS ISLAND VERBENA



BOUTELOUA GRACILIS
BLUE GRAMMA GRASS



FESTUCA IDAHOENSIS 'SISKYOU BLUE'
IDAHOE BLUE FESCUE



MUHLENBERGIA RIGIDA 'NASHVILLE'
PURPLE MUHLY



TREATMENT OF PAVING IN AREAS WITH ROOTS CLOSE TO CURB





TREATMENT OF AREAS CLOSE TO PAVED NEEDLES/ NOSES



TREATMENT OF PAVING IN AREAS ADJACENT TO EXISTING MONUMENT SIGNS

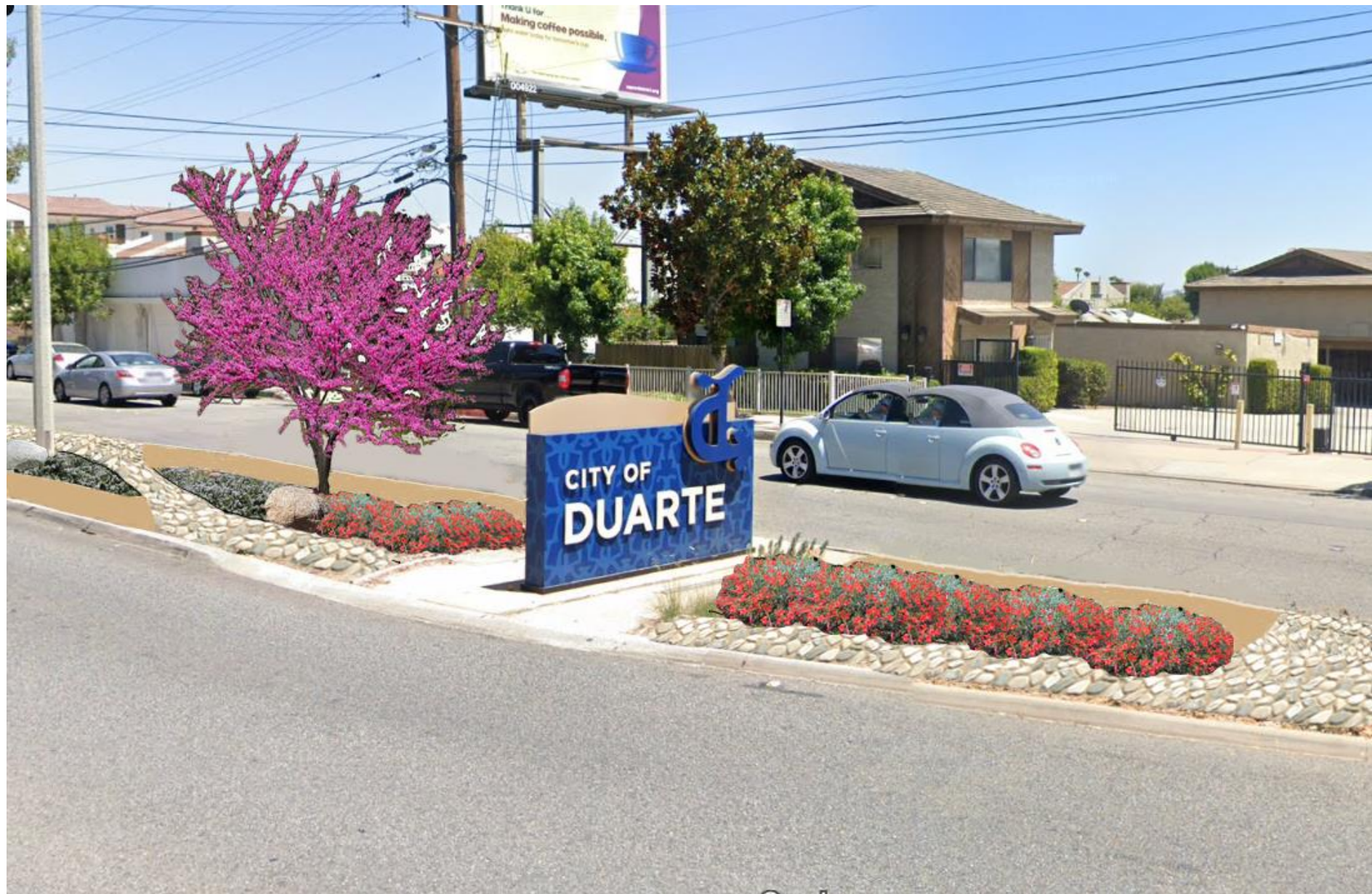


TREATMENT OF PAVING IN AREAS ADJACENT TO EXISTING MONUMENT SIGNS

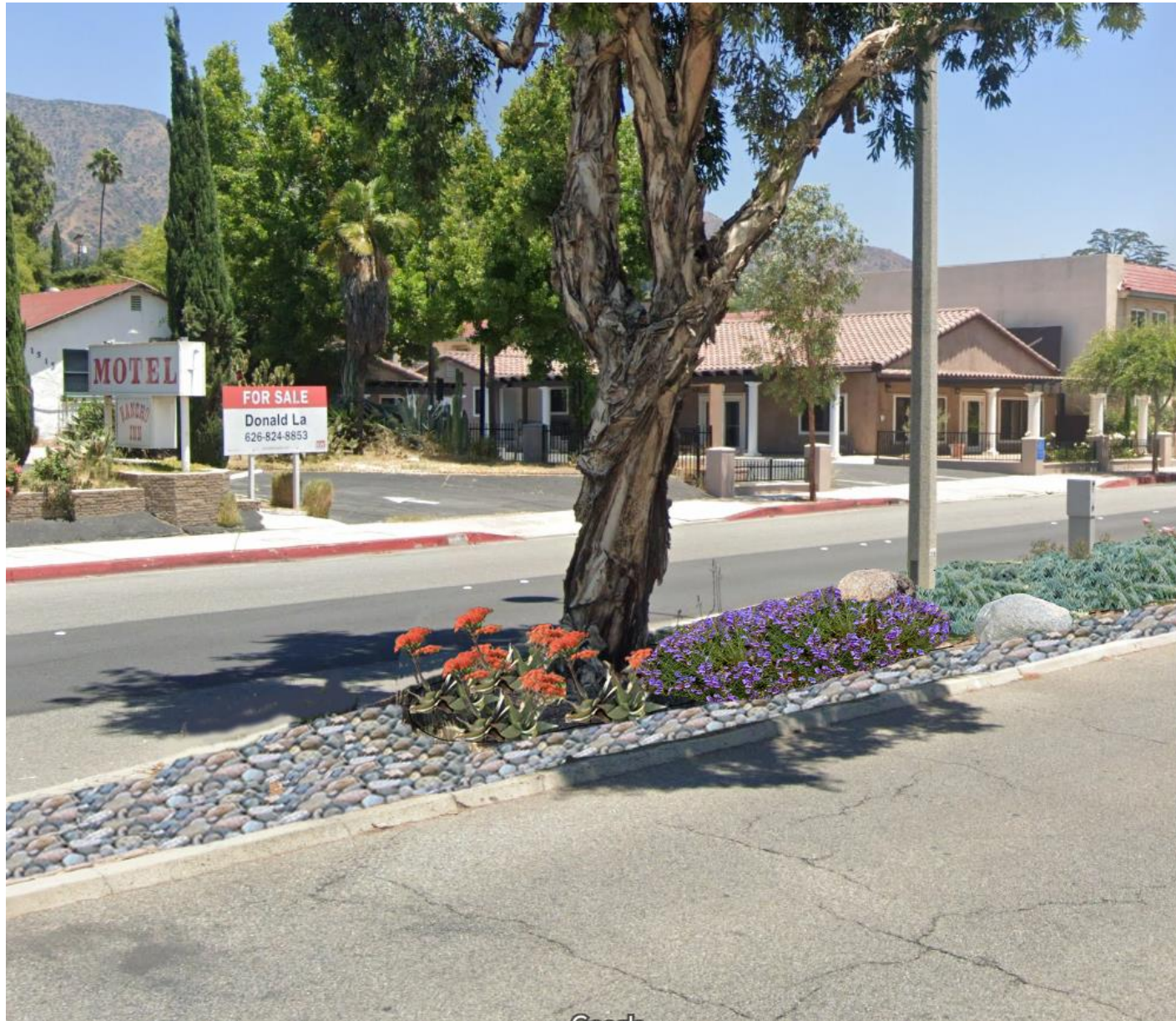
	PRELIMINARY LANDSCAPE IMAGES				City of Duarte		DEPARTMENT		
	PLANS PREPARED BY: ARMSTRONG AND WALKER <i>Landscape Architecture</i>				280 Maj Canyon Road Duarte, Ca. 91010 Phone: (626) 357-4599 Email: armstrongwalker@gmail.com		1600 HUNTINGTON DR DUARTE, CA 91010 PH: (626) 357-7931		PROJECT HUNTINGTON DRIVE MEDIANS
	APPROVED BY		DRAWN BY RW		DRAWING NUMBER		SHEET L-3 OF 3		
		CHECKED BY AA		DATE					



ALTERNATE B PERSPECTIVE AT MONUMENT SIGN



ALTERNATE A PERSPECTIVE AT MONUMENT SIGN



ALTERNATE A PERSPECTIVE CLOSE TO NEEDLE/ NOSE



ALTERNATE A PERSPECTIVE SHOWING PAVING ENDING WHERE
ROOTS ARE CLOSE TO CURB



CROSS SECTION ALTERNATE A



CROSS SECTION ALTERNATE B



COBBLE IN INTERIOR OF
MEDIANS



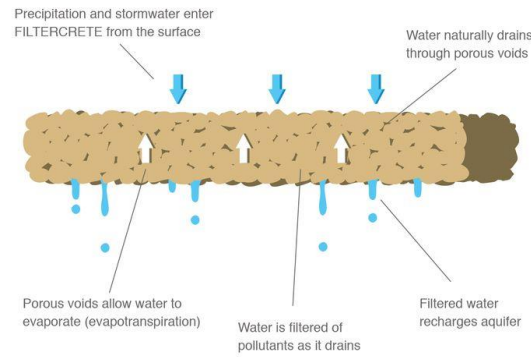
COBBLE AT NOSE OF MEDIAN



DECOMPOSED GRANITE



PERVIOUS CONCETE



PERVIOUS CONCETE SECTION



PERVIOUS CONCETE

PAVING IMAGES